



**PILBARA DIESEL**  
*MENDING MACHINES, MAKING MEMORIES*



**COMPANY  
PROFILE**

# **PILBARA DIESEL**

**NEWMAN, PERTH | AUSTRALIA**

**4 Yalberree Street Newman WA 6753**  
**5 Barkley Street Bullsbrook WA 6084**

**+61 400 329 997**  
**+61 492 510 098**

**admin@pilbaradiesel.com.au**  
**hr@pilbaradiesel.com.au**  
**accounts@pilbaradiesel.com.au**

**www.pilbaradiesel.com.au**

**Note:** The information contained within this document has been developed within a specific scope, and might be updated in the future.

**We acknowledge the Traditional Custodians of Country throughout Australia. We pay our respect to them, and to Elders past, present and future.**

ACN 679947383 | ABN 63679947383





# ***ABOUT US***

---

**PILBARA DIESEL** is a maintenance and repair company with an intent to be a global leader in the dynamic and ever changing automotive, mining, construction and civil industries. Our skilled team of experienced heavy-duty mechanics is dedicated to provide top-notch service at your doorstep, ensuring the optimal performance, safety and longevity of your equipment. Whether you are in need of routine maintenance, intricate repairs, or comprehensive diagnostics, Pilbara Diesel is your trusted partner in keeping your heavy-duty assets operating at peak efficiency.

With our Rapid Response team on the go, at Pilbara Diesel we understand the importance of minimizing downtime for your heavy-duty machinery. Our team of highly skilled, experienced and certified technicians will respond swiftly and urgently to tackle repairs and maintenance onsite. We prioritise efficiency, delivering prompt and reliable solutions to get your assets back to operation.

Our comprehensive maintenance practice offers our expertise, management, processes, business challenges and objectives. Our ability to develop, solutions and implement comprehensive maintenance solutions allows you to focus on core tasks and complete projects on schedule. We customise comprehensive maintenance solution programs to suit your production requirements and minimize downtime.

We maintain constant dialogue with communities and customers because we want to learn together to build a positive social, economic platform with everyone on board that's people, who are at the centre of decisions we value individual talent and seek to be more diverse and inclusive, acting with respect and practising open dialogue.



**Driving  
Excellence in  
Heavy-Duty  
Maintenance  
and Repair**

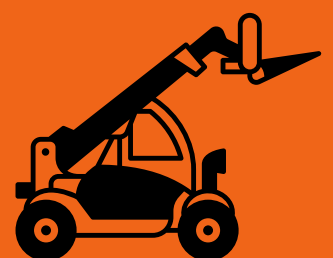
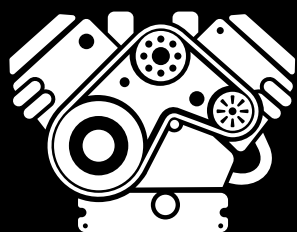


# **MISSION STATEMENTS**

- To provide our customers quality and affordable technical support for their equipment.
- To provide a safe and healthy work environment for our employees, and ensure they have the resources and information needed to perform their best at the satisfaction of our customers.
- To stay focused on the future, keep informed of the current technical trends in the industry
- To be flexible enough to provide and meet the needs of customers depending on their priorities and individual needs.
- To ensure all work is done to manufacturer's specifications and standards

## **OUR VISION**

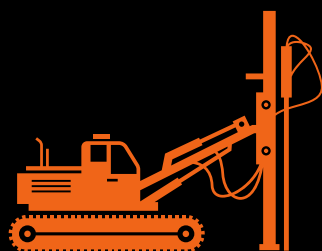
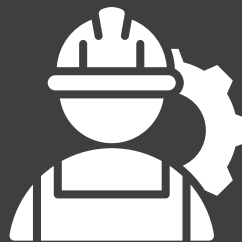
To be the trusted leader in technical support, delivering exceptional customer experiences, driven by our values of integrity, diversity, equity, and inclusion. We strive to make a positive impact on the lives of our customers, employees, and communities, while setting the standard for excellence in our industry, and fostering a culture of innovation, teamwork, and continuous improvement



# OUR VALUES

Our values are the guidelines and path that translate to what we believe in

- **ACT WITH INTEGRITY:** We build relationship of genuine trust and promote the spirit of openness and transparent means of communication with respect and integrity
- **LET'S DO IT NOW:** We are engaged; responsible and have the discipline to generate the result and overcome challenges. We act with urgency, perfection and in a timely manner in pursuit of excellence, sustainable and reliable business partner.
- **LIFE MATTERS MOST:** Your life, my life, his/her life our lives matter most than material results and goods we strive to produce
- **VALUE OF OUR CUSTOMERS:** Our customers are always right, together we build a work environment aimed at satisfying the needs and demands of our customers. We believe business partners are essential to live our purpose, to improve life and transform the future together.
- **DIVERSITY, EQUITY AND INCLUSION:** Diversity equity and inclusion are at the forefront of our core values. We are committed to creating access and opportunities for high potential diverse talent in order to harness all skillsets from a diverse spectrum.





# FROM ROUTINE MAINTENANCE TO COMPLEX REPAIRS

## Equipment Maintenance

To prevent costly failures, all equipment must be properly maintained. We prioritize scheduled maintenance to minimize downtime and avoid unnecessary breakdown costs for our customers.



## Roadside Assistance

If you are currently in a breakdown situation within the greater pilbara region, getting help is as easy. Have peace of mind, Pilbara diesel is just a phone call away to lend you a hand. Our pool of mobile mechanics guarantees you fast, quality and friendly comeback on the road. Simply reach out at 0400329997



## Equipment Repairs

Pilbara Diesel has recognized a strong demand in the earthmoving industry for reliable, high-quality field service repairs. We provide a comprehensive range of services, including component extraction, electrical work, and much more.



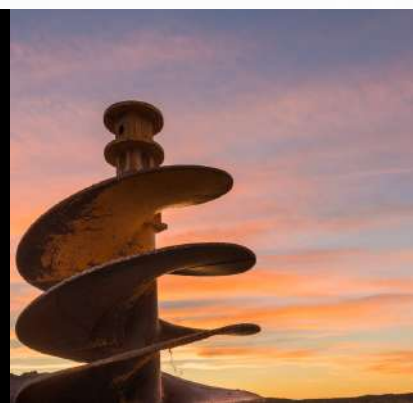
# **SERVICES**

Pilbara Diesel works hard to provide all of our customers with top notch maintenance and repair services at competitive prices. In addition to our standard repair services, we also offer technical support, guidance and instructions on how to maintain the working conditions of your assets. When you need a professional repair solution you can be sure to trust the services of Pilbara Diesel.

- Mining, Construction, Civil, Earthmoving Plants and Equipment Repairs
- Preventative Maintenance and Diagnostics Needs
- Field Service
- Engine Overhauls
- Electrical and Trailer Repairs
- Powertrain and Driveline Repairs including Brakes and Suspension
- Air Conditioning
- Major and Minor Shutdowns, PCR and Midlife's
- Rapid Response
- Labour Hire

## **COMPONENT REBUILDS**

We take great care in selecting the machines and components we rebuild. During disassembly, each machine and component is fully taken apart, with every removed part thoroughly inspected for defects and wear.





# MINING

We specialise in comprehensive repairs and maintenance services to ensure maximum uptime and efficiency for your mining fleet. At Pilbara Diesel we recognise that mining industry operates around the clock, and unexpected breakdowns can have significant implications. Our dedicated team is available 24/7 to respond promptly to emergency repairs needs, minimising downtime and optimising productivity.

## MACHINE HEALTH OPERATIONS & SUPPORT

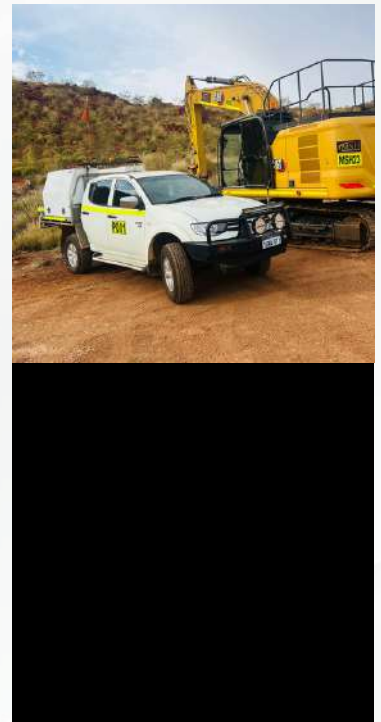
Increasing machine availability and uptime while offloading the often-time-consuming responsibility of machine maintenance to a trusted partner.

## SKILLED WORKFORCE AND LEADERSHIP

We cultivate and continuously nurture a network of highly engaged skilled maintenance talent. Trust our people with technical and professional functions.

## ASSET OPTIMIZATION

Improve asset performance and parts productivity, driving down costs for your business through extending asset life with best maintenance practices.





**Your Trusted  
Partner for Peak  
Performance,  
Anytime,  
Anywhere**



# **HEALTH AND SAFETY**

## **POLICY STATEMENT**

At Pilbara Diesel Safety is one of our key core values. We prioritise the safety of people and the environment, acting with respect and integrity

Having an ability to work is good but having an ability to work safely is the best. Our health is our ultimate capital therefore we must cultivate a working culture that allows us to work safely and ensures that the people working with us work safely too.

Duty of care: Our love means looking beyond the task and loving ourselves and colleagues enough to ensure the safety requirements are properly adhered to for the safety of everyone with our family at home inclusive thereby ensuring a safe workplace that keeps up with the evolving safety standards.



# **10 CORE COMPONENTS OF HEALTH & SAFETY EXCELLENCE**

---

## **1. Leadership and Commitment**

The foundation of any successful health and safety program is rooted in the commitment of its leadership. Senior management's belief in safety as a top priority allocates necessary resources and fosters a culture where safety becomes an intrinsic value. This commitment is often evidenced by developing and communicating a clear vision for safety that resonates throughout the organization.

Additionally, leaders leading by example demonstrate to the workforce that safety isn't just a theoretical priority but a daily practice, creating trust and encouraging everyone to prioritize safety in their respective roles.

## **2. Risk Management policy**

At the heart of health and safety is the principle of risk management. It is a proactive approach that identifies potential hazards before they become real threats. At Pilbara Diesel we endeavour to determine the likelihood and impact of these hazards by regularly assessing risks associated with various tasks, processes, or equipment.

Through systematic hazard analysis, at Pilbara Diesel we rank risks and develop strategies to mitigate them by reducing the likelihood of occurrence, minimizing the impact, or, ideally, eliminating the hazard altogether. This continuous process is essential for adapting to changes and promptly identifying and addressing new risks.



### **3. Training and Competence policy**

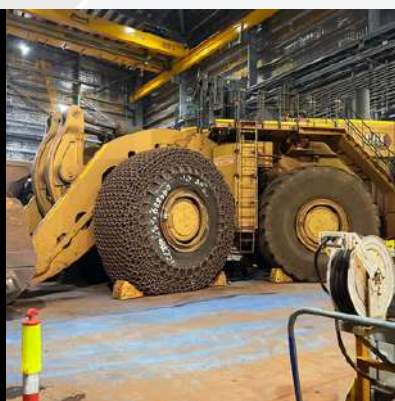
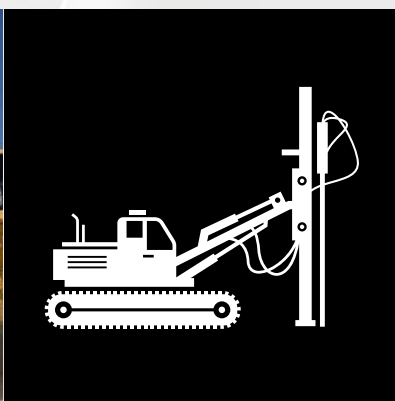
Knowledge is the first line of defence against accidents and incidents. Therefore, it is vital to ensure that all individuals at Pilbara Diesel, be they employees, contractors, or visitors, are equipped with the necessary information. Our Training programs are comprehensive in addressing general safety principles and specific hazards related to an individual's role.

But beyond imparting knowledge, Our training aim to enhance competence, ensuring that individuals know what to do and can effectively apply this knowledge in real-world situations. Such training ensures a consistent understanding and approach to managing risks across the organization.

### **4. Communication and Engagement policy**

In the dynamic environment of most workplaces, open communication becomes a cornerstone of effective safety management. Open channels encourage feedback from the ground level, often the first to identify potential new hazards. Organizations benefit from a wealth of frontline information by fostering an environment where workers feel comfortable reporting hazards, near misses, or incidents.

This open dialogue ensures the workforce is engaged and feels a part of the safety process. Furthermore, by ensuring that there are no repercussions for honest reporting, Pilbara Diesel encourage transparency, which can be critical in identifying and rectifying potential issues before they escalate.



## **5. Emergency Preparedness and Response policy**

Despite the best efforts and protocols, emergencies can and do happen. Whether natural disasters, fires, chemical spills, or major accidents, organizations must be prepared to respond swiftly and effectively. A well-defined emergency response plan, tailored to the organization's specific risks, ensures a clear protocol for an unforeseen incident.

By regularly testing these protocols through drills and exercises, organizations can identify gaps, ensure that all employees know their roles during emergencies, and minimize potential harm when every second counts.

## **6. Performance Measurement policy**

At Pilbara Diesel as a structured system, it's essential to track progress and performance. By regularly conducting audits, inspections, and reviews, our system can gauge how well our health and safety protocols align with established standards. This process isn't just about finding faults and identifying areas of excellence that can be modeled elsewhere.

Key Performance Indicators (KPIs) are quantifiable health and safety outcomes metrics. By tracking these KPIs, Our organisation can measure trends over time, ensuring that they are moving in the right direction and can adjust strategies when they're not achieving the desired results.

## **7. Incident Investigation and Analysis policy**

Incidents, while unfortunate, offer a unique opportunity to learn and adapt. Every incident provides a snapshot of where the system faltered. Investigating these incidents to pinpoint the root causes, rather than just superficial reasons, provides insights into systemic weaknesses. A thorough analysis



ensures the organization treats symptoms and addresses the underlying issues.

Once the cause is identified, the organization should openly communicate its findings. This transparency educates the workforce and reinforces the company's commitment to safety and continuous learning.

## **8. Continuous Improvement Kaizen Policy**

The dynamic nature of industries, technologies, and processes means that what works today might be outdated tomorrow. Hence, health and safety systems need to adapt and evolve. This evolution is grounded in the principle of continuous improvement. It's not enough to establish protocols and forget them.

Regular reviews ensure the safety systems keep pace with organizational and industry changes. The safety system becomes more resilient, robust, and relevant by incorporating feedback from various sources, especially lessons from incidents and near misses.

## **9. Safety Culture and Behaviour**

Beyond protocols and processes lies the human element, often the most variable and critical component of any safety system. Cultivating a safety culture means embedding safety values into the organization's fabric. When safety becomes second nature, individuals act safely not because they have to but because they believe in its importance.

A focus on behaviour-based safety further refines this approach. It recognizes that individual behaviours, habits, and choices significantly affect safety outcomes. Pilbara Diesel

aims to drive a more profound and lasting commitment to safety by understanding and guiding these behaviours.

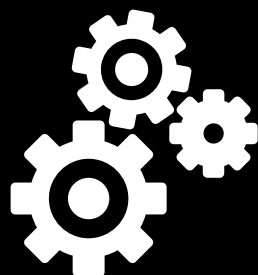
## **10. Legal and Regulatory Compliance policy**

Operating within the confines of the law isn't just about avoiding penalties; it's about upholding a commitment to the well-being of employees, stakeholders, and the community. Local, regional, and national laws and regulations provide a framework for what's acceptable and expected regarding health and safety.

Ensuring compliance means regularly reviewing operations against these standards. But given the ever-evolving nature of regulations, staying abreast of any changes is equally crucial. By proactively adapting to new or amended regulations, at Pilbara Diesel we demonstrate respect for the law and an unwavering commitment to the highest safety standards.

### **Conclusion**

In the intricate tapestry of organizational operations, health, and safety stand out as threads of utmost significance. The "10 Core Components of Health and Safety Excellence" serve as pillars that uphold the integrity and resilience of any institution committed to the well-being of its people. By understanding and implementing these core tenets, Pilbara Diesel fulfill regulatory obligations and underscore their moral commitment to employees, stakeholders, and the broader community.







**PILBARA DIESEL**  
MENDING MACHINES, MAKING MEMORIES

**Optimizing  
Equipment  
for Safety,  
Longevity,  
and Efficiency**



**PILBARA DIESEL**  
**MENDING MACHINES, MAKING MEMORIES**